

EASE FABtool installation

Safety instructions

The motor may only be operated after reading these safety instructions, failing to do so might cause serious harm.

- Do not operate a blind which in any way is damaged
- Charging of battery operated blinds, only with suitable chargers
- only operate the blind within the prescribed environmental situation
- the motor may only be used in combination with the recommended and suitable power source, originally supplied with the blind.
- A remote control is considered NOT to be a children's toy
- window decoration motors should be replaced when the rated cycle limitation is reached



Never drop the motor!



Never drill into the motor!



Do not immerse into liquid!



Avoid collisions!

Use the FABtool to program your EASE blinds.

Requirements

Windows 10 computer

- REQUIRED
- To be sourced by fabricator

Keypad



- OPTIONAL, but strongly advised
- To be sourced locally
- USB connection

EASE dongle



- REQUIRED
- Supplied by Hunter Douglas
- USB connection

QR-code scanner

Currently support models:

- Honeywell Xenon 1900/1910 series
- ZEBRA DS2208



- OPTIONAL, but for production environments strongly advised. *It is possible to enter a barcode using the keyboard, but is very time consuming*
- USB connection
- To be sourced locally

Hardware setup

Before you run the tool make sure the above hardware is properly setup:

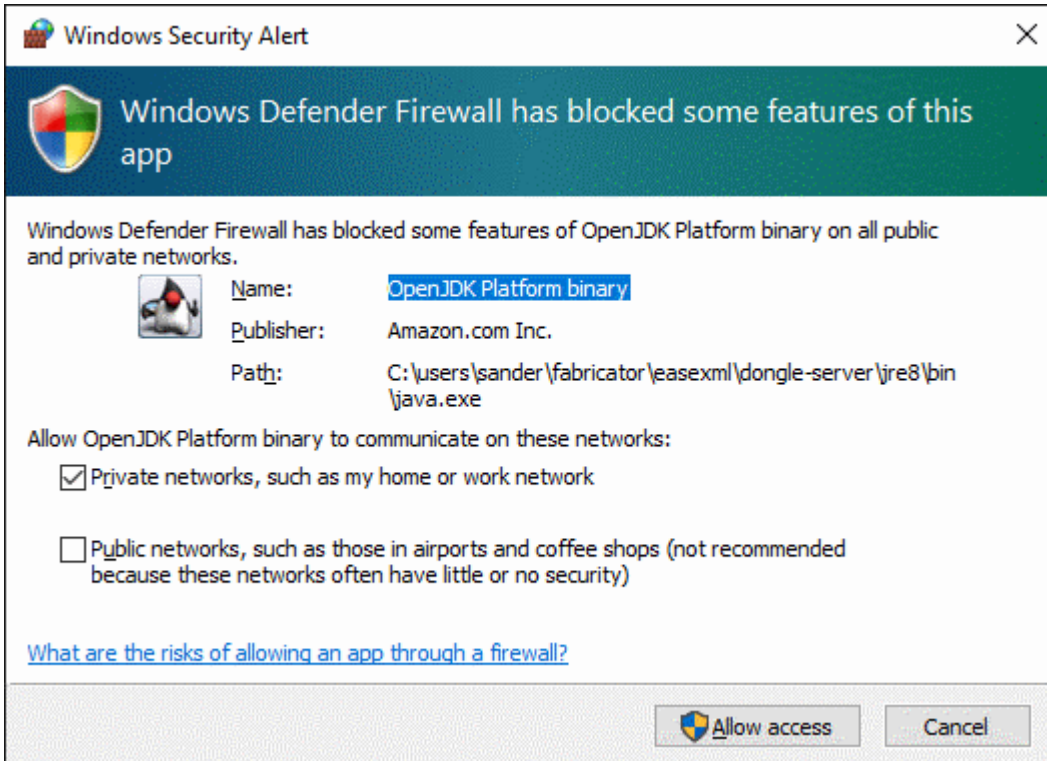
Ease Dongle

1. Insert the dongle in one of the available USB ports on your computer.

2. Download the dongle windows driver from [here](#)
3. Extract the zip to your local machine.
4. In your setup go to `Device manager`
5. Select the hmip-dongle in the `Ports` list
6. Select `Update Driver` and choose the location where you extracted the downloaded driver.
7. Start the FABtool using the "EASE FABtool" icon .



8. While starting up the tool an extra window will open:



make sure `Private networks` checkbox is checked and click `Allow access` . (This only required once.)
 If the above window does not appear AND the tool is unable to run properly go [here](#) for troubleshooting.

QR code Scanner

1. Connect the scanner to your computer.
2. Depending on your scanner type, scan one of the below barcodes.

Honeywell Xenon 1900/1910 series



ZEBRA DS2208



Your scanner is now ready to be used.

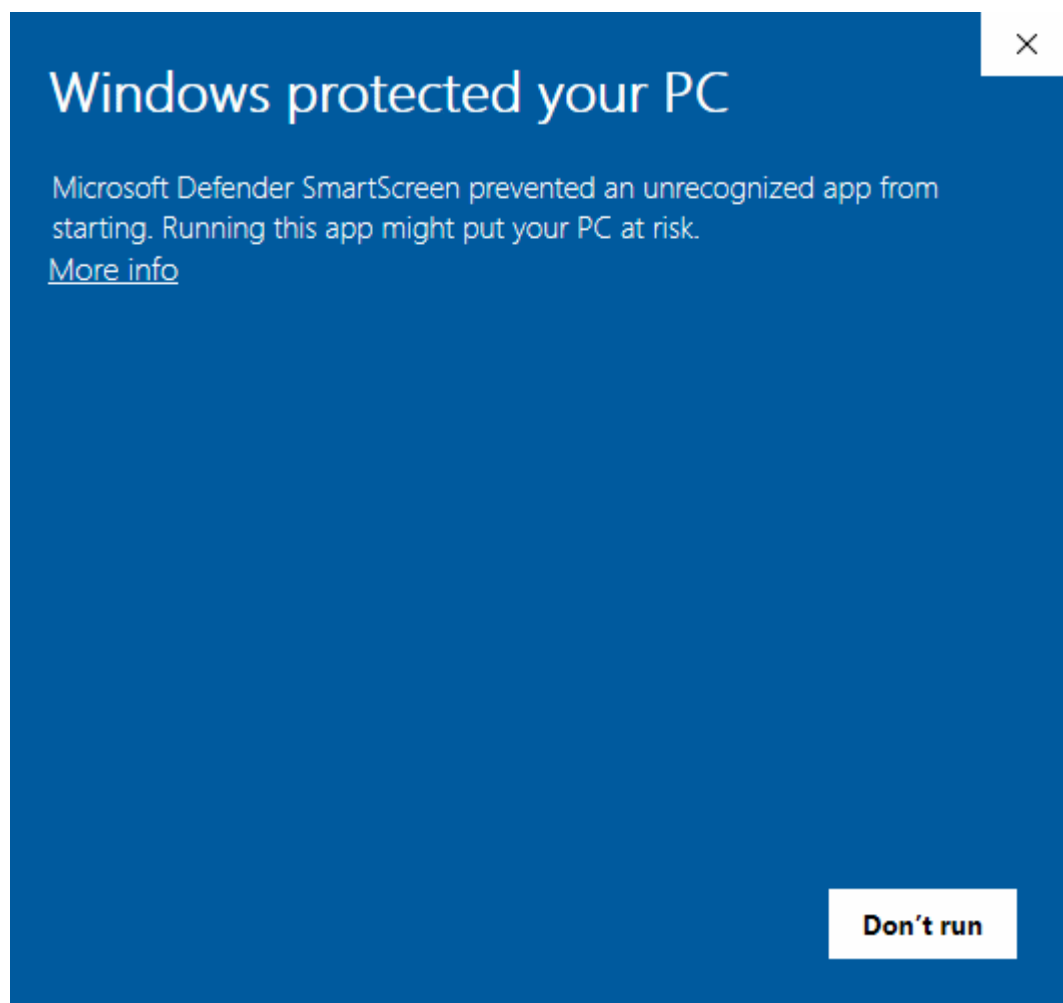
FABtool installation

1. Download the installation from the link below (Choose *latest* right under Download setup)

[fabtool installation](#)

2. Run the downloaded file and follow the instructions.

If you encounter the below message choose "More info" and click on the below button "Install Anyway".



The installation has finished. You can now run the tool and configure it to adapt it to your preferences:

1. Open the tool, navigate to the `File` menu and choose `Preferences`.
2. From there browse through the available options.

Important notice

Hunter Douglas Europe B.V. and its affiliates (Hunter Douglas) reserve the right to make corrections, enhancements, improvements and other changes to its products and services, and to discontinue any product or service. Buyers should obtain the latest relevant information before placing orders and should verify that such information is current and complete. All products (also referred to herein as "components") are sold subject to Hunter Douglas' terms and conditions of sale supplied at the time of order acknowledgment. Hunter Douglas warrants performance of its components to the specifications applicable at the time of sale, in accordance with its standard warranty terms. Testing and other quality control techniques are used to the extent Hunter Douglas deems necessary to support this warranty. Except where mandated by applicable law, testing of all parameters of each component is not necessarily performed. Hunter Douglas assumes no liability for applications assistance or the design of Buyers' products. Buyers are responsible for their products, applications and interfaces using Hunter Douglas components. To minimize the risks associated with Buyers' products and applications, Buyers should provide adequate design and operating safeguards. Hunter Douglas does not warrant or represent that any license, either express or implied, is granted under any patent right, copyright, mask work right, or other intellectual property right relating to any combination, machine, or process in which Hunter Douglas components or services are used. Information published by Hunter Douglas regarding third-party products or services does not constitute a license to use such products or services or a warranty or endorsement thereof. Use of such information may require a license from a third party under the patents or other intellectual property of the third party, or a license from Hunter Douglas under the patents or other intellectual property of Hunter Douglas. Reproduction of Hunter Douglas information in Hunter Douglas data sheets is permissible only if reproduction is without alteration and is accompanied by all associated warranties, conditions, limitations, and notices. Hunter Douglas is not responsible or liable for any altered documentation. Information of third parties may be subject to additional restrictions. Resale of Hunter Douglas components or services with statements different from or beyond the parameters stated by Hunter Douglas for that component or service voids all express and any implied warranties for the associated Hunter Douglas component or service and is an unfair and deceptive business practice. Hunter Douglas is not responsible or liable for any such statements. Buyers acknowledge and agree that they are solely responsible for compliance with all legal, regulatory and safety-related requirements concerning its products, and any use of Hunter Douglas components in its applications, notwithstanding any applications-related information or support that may be provided by Hunter Douglas. Buyers represent and agree that they have all the necessary expertise to create and implement safeguards which anticipate dangerous consequences of failures, monitor failures and their consequences, lessen the likelihood of failures that might cause harm and take appropriate remedial actions. Buyers fully indemnify Hunter Douglas and its representatives against any damages arising out of the use of any Hunter Douglas components in safety-critical applications. Manufacturer/Supplier address: Hunter Douglas Europe B.V, P.O. Box 5072 Piekstraat 2 3008 AB Rotterdam The Netherlands