

PowerView® Rechargeable Li-ion Battery Pack

The PowerView® Li-ion Battery Pack can be ordered as a retrofit to any existing Alkaline battery tube. Or can be ordered with any battery powered PowerView® blind

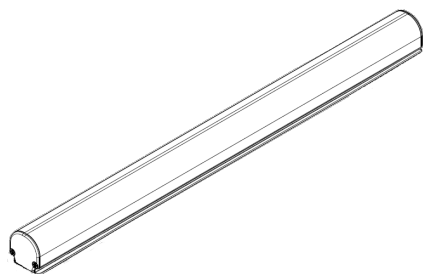
1. Delivery Conditions

Note

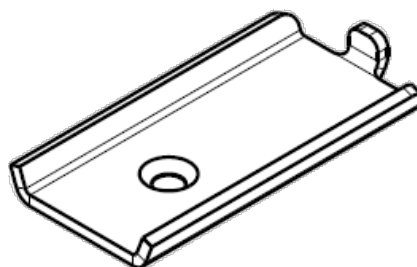
Shipping regulations

Due to regulations concerning transport of Lithium ion Batteries the *State Of Charge* (from now on S.O.C.) can be only 30% of capacity. To assure a smooth installation process re-charging at least shortly before first use is recommended.

1.1 Package Contents



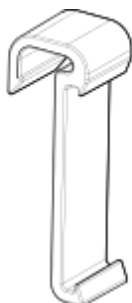
Battery pack



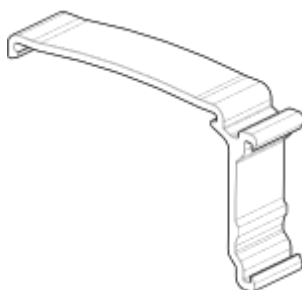
Wall mounting bracket (2pcs)

1.2 Optional Accessories

Headrail mounting clips will be provided where available depending on the blind type.



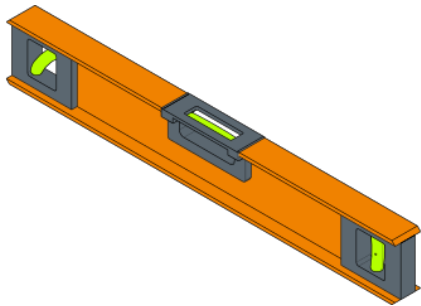
Clip VB



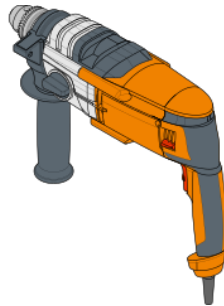
Clip VVB

1.3. Installation parts & equipment

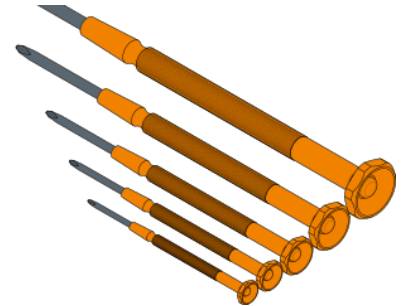
To install the power supply and for connecting wires to the connection terminal block, following parts and equipment are needed.



Level



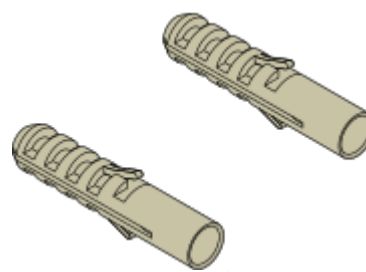
hammer drill



Set of screwdrivers



flat head screws (2pcs)



wall plugs (2pcs)

2. Mounting

For installation tips of the blinds we refer to the dedicated manual of the specific blinds. the Battery Pack can be mounted in 2 different ways:

- Attached to the headrail
- Wall or ceiling mounted

IMPORTANT

Mounting the battery pack should take place after the mounting of the blind has been completed. Mounting the blind with the pack attached; might cause the Battery Pack to slide out of its clips and fall, causing possible dangerous situations.

However placement and mounting of the battery pack can be prepared in advance of mounting the blind.

2.1 Headrail Mounting

Headrail mounting is possible on all EOS system headrails for VB and VVB.(excluding Plissé & Duette; Roller blinds and Twist® Roller Blind). Special clips will be supplied with the blind when the Rechargeable Battery pack solution is chosen in the ordering system. When using headrail clips the wall mounting plates can be discarded. Mounting on venetian blinds can be done either utilising the clips, or directly on the headrail using the build-in magnets of

the battery pack.

Alternatively adhesive fixing strip can be used to attach the pack onto the headrail.

- mount the pack onto the headrail by clicking or sliding it into place.
- you are now ready to connect power to your motor/blind and set up your PowerView® network

Tip

Alternatively, dual sided adhesive tape can be used to mount the wallmounting brackets on the back of the Headrail.

2.2 Wall Mounting

Typically wall mounting is needed on the following blinds; all CHR systems, all types of Plissé Duette, Roller blinds including Twist® Roller Blind, Silhouettes and Pirouettes.

please use this simple procedure:

- pick your mounting point
- mount one bracket
- use the pack and a level to determine the 2nd bracket's position
- mount the 2nd bracket and the battery pack
- you are now ready to connect power to your motor/blind and set up your PowerView® network

3. Charging

Only use a suitable charger for charging the 14.4V PowerView® Li-ion Battery pack, preferably the dedicated PowerView® charger.

Typical charging time from empty to fully charged is 3-4 hrs. For detailed information about the charger please click [here](#)

4. Storage

Storage location should be dry and out of range of any other chemical substances. Li-ion Rechargeable batteries should be recharged at least once a year.

Note

When storing larger quantities the building insurance company should be consulted prior to storage. Local storage regulation should be consulted to ensure legal and safe storage.

5. Special features

5.1 In App Battery Indication

Due to the difference in battery chemistry the battery indication in the app will be less accurate. Received low battery indication warning might appear to be too late. This is caused by the battery characteristic of the Li-ion battery.

Important notice

Hunter Douglas Europe B.V. and its affiliates (Hunter Douglas) reserve the right to make corrections, enhancements, improvements and other changes to its products and services, and to discontinue any product or service. Buyers should obtain the latest relevant information before placing orders and should verify that such information is current and complete. All products (also referred to herein as "components") are sold subject to Hunter Douglas' terms and conditions of sale supplied at the time of order acknowledgment. Hunter Douglas warrants performance of its components to the specifications applicable at the time of sale, in accordance with its standard warranty terms. Testing and other quality control techniques are used to the extent Hunter Douglas deems necessary to support this warranty. Except where mandated by applicable law, testing of all parameters of each component is not necessarily performed. Hunter Douglas assumes no liability for applications assistance or the design of Buyers' products. Buyers are responsible for their products, applications and interfaces using Hunter Douglas components. To minimize the risks associated with Buyers' products and applications, Buyers should provide adequate design and operating safeguards. Hunter Douglas does not warrant or represent that any license, either express or implied, is granted under any patent right, copyright, mask work right, or other intellectual property right relating to any combination, machine, or process in which Hunter Douglas components or services are used. Information published by Hunter Douglas regarding third-party products or services does not constitute a license to use such products or services or a warranty or endorsement thereof. Use of such information may require a license from a third party under the patents or other intellectual property of the third party, or a license from Hunter Douglas under the patents or other intellectual property of Hunter Douglas. Reproduction of Hunter Douglas information in Hunter Douglas data sheets is permissible only if reproduction is without alteration and is accompanied by all associated warranties, conditions, limitations, and notices. Hunter Douglas is not responsible or liable for any altered documentation. Information of third parties may be subject to additional restrictions. Resale of Hunter Douglas components or services with statements different from or beyond the parameters stated by Hunter Douglas for that component or service voids all express and any implied warranties for the associated Hunter Douglas component or service and is an unfair and deceptive business practice. Hunter Douglas is not responsible or liable for any such statements. Buyers acknowledge and agree that they are solely responsible for compliance with all legal, regulatory and safety-related requirements concerning its products, and any use of Hunter Douglas components in its applications, notwithstanding any applications-related information or support that may be provided by Hunter Douglas. Buyers represent and agree that they have all the necessary expertise to create and implement safeguards which anticipate dangerous consequences of failures, monitor failures and their consequences, lessen the likelihood of failures that might cause harm and take appropriate remedial actions. Buyers fully indemnify Hunter Douglas and its representatives against any damages arising out of the use of any Hunter Douglas components in safety-critical applications. Manufacturer/Supplier address: Hunter Douglas Europe B.V, P.O. Box 5072 Piekstraat 2 3008 AB Rotterdam The Netherlands