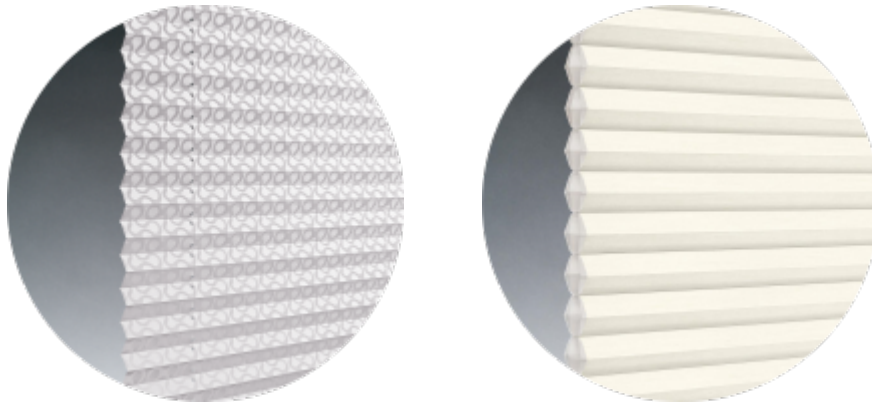


PowerView® CHR Top-Down/Bottom-Up blind

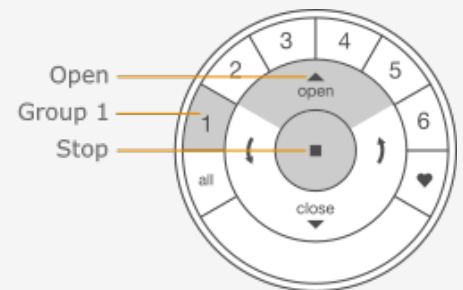
Programming with Remote control


This instruction will program a PowerView® Plissé or Duette® blind.

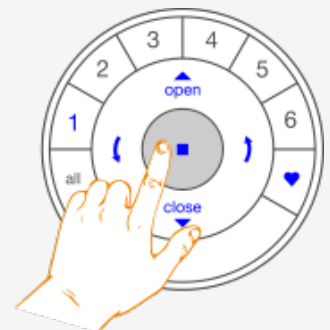



1. Pairing a remote to the blind

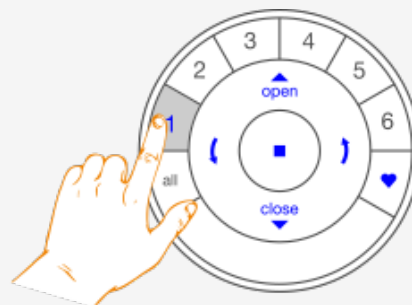
This instruction will make use of the following buttons on the Remote:



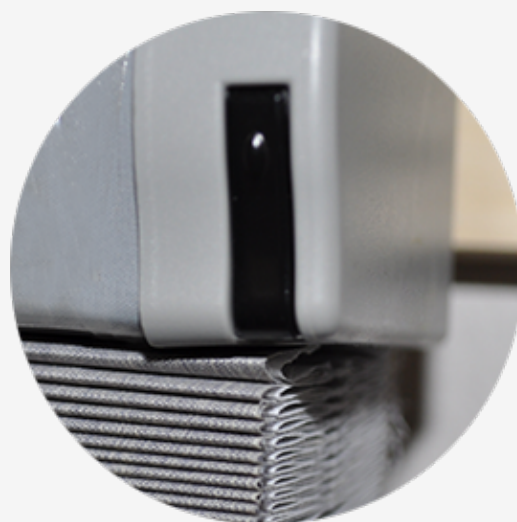
- 1.1 **Press and hold** the  stop button for 6 seconds.
Keep pressing until the remote lights start blinking.




1.2 **Press the  group1 button.**

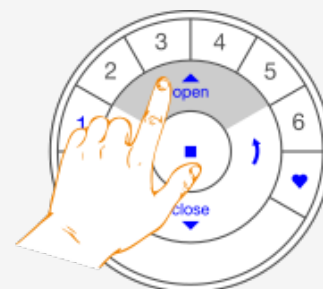


1.3 **Press and hold the manual control button.**



1.4 **Press the  open button.**

The blind will jog 1x.

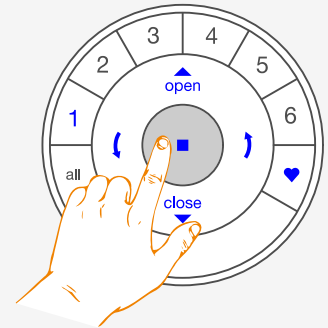


1.5 **Release the manual control button.**

1.6 **Press and hold** the **stop** button for 6 seconds.

Keep pressing until the remote lights stop blinking.

The remote will exit programming mode automatically after 20 seconds.

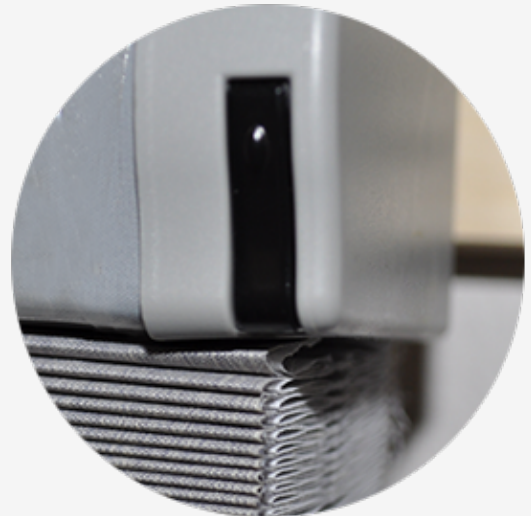


2. Calibration.

A calibration will send the blind up and down a couple of times to set the endpoints.

2.1 **Press the manual control button for approximately 6 seconds.**

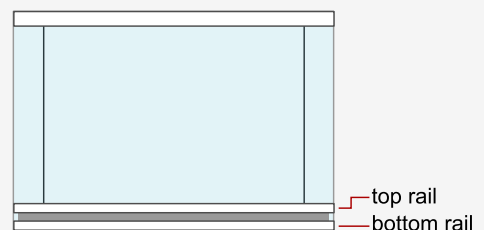
The blind will jog after 6 seconds.



2.2 **Release the manual control button .**

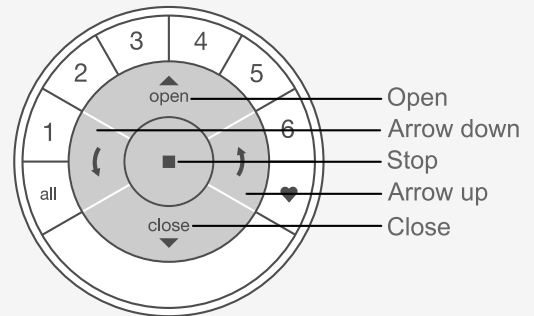
depending on the product the shade will start moving up and down several times defining new open and close positions.

2.3 The blind will finish with both top and bottom rail at the bottom position.




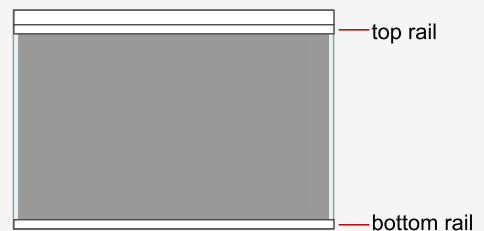
3. Moving / checking the blind.


This instruction will make use of the following buttons on the Remote:

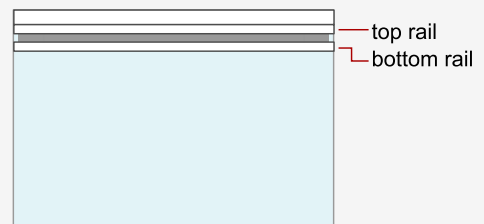



3.1 **Press** group 1
Group 1 will light up.

3.2 **Press**  arrow up
The top rail will move to the top position.



3.3 **Press**  open
The bottom rail will move to the top position.

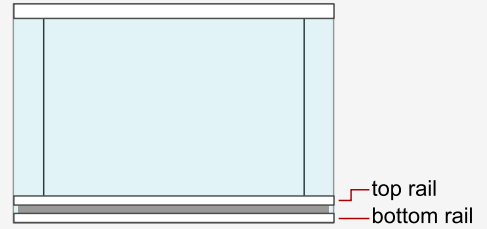


3.4 **Press**  close
The bottom rail will move to the bottom position



3.5 **Press** ↓ **arrow down**

The top rail will move to the bottom position



3.6 **Press** ▲ **open**

Top and bottom rail will move to the top position



3.7 **Blind is ready.**

Important notice

Hunter Douglas Europe B.V. and its affiliates (Hunter Douglas) reserve the right to make corrections, enhancements, improvements and other changes to its products and services, and to discontinue any product or service. Buyers should obtain the latest relevant information before placing orders and should verify that such information is current and complete. All products (also referred to herein as "components") are sold subject to Hunter Douglas' terms and conditions of sale supplied at the time of order acknowledgment. Hunter Douglas warrants performance of its components to the specifications applicable at the time of sale, in accordance with its standard warranty terms. Testing and other quality control techniques are used to the extent Hunter Douglas deems necessary to support this warranty. Except where mandated by applicable law, testing of all parameters of each component is not necessarily performed. Hunter Douglas assumes no liability for applications assistance or the design of Buyers' products. Buyers are responsible for their products, applications and interfaces using Hunter Douglas components. To minimize the risks associated with Buyers' products and applications, Buyers should provide adequate design and operating safeguards. Hunter Douglas does not warrant or represent that any license, either express or implied, is granted under any patent right, copyright, mask work right, or other intellectual property right relating to any combination, machine, or process in which Hunter Douglas components or services are used. Information published by Hunter Douglas regarding third-party products or services does not constitute a license to use such products or services or a warranty or endorsement thereof. Use of such information may require a license from a third party under the patents or other intellectual property of the third party, or a license from Hunter Douglas under the patents or other intellectual property of Hunter Douglas. Reproduction of Hunter Douglas information in Hunter Douglas data sheets is permissible only if reproduction is without alteration and is accompanied by all associated warranties, conditions, limitations, and notices. Hunter Douglas is not responsible or liable for any altered documentation. Information of third parties may be subject to additional restrictions. Resale of Hunter Douglas components or services with statements different from or beyond the parameters stated by Hunter Douglas for that component or service voids all express and any implied warranties for the associated Hunter Douglas component or service and is an unfair and deceptive business practice. Hunter Douglas is not responsible or liable for any such statements. Buyers acknowledge and agree that they are solely responsible for compliance with all legal, regulatory and safety-related requirements concerning its products, and any use of Hunter Douglas components in its applications, notwithstanding any applications-related information or support that may be provided by Hunter Douglas. Buyers represent and agree that they have all the necessary expertise to create and implement safeguards which anticipate dangerous consequences of failures, monitor failures and their consequences, lessen the likelihood of failures that might cause harm and take appropriate remedial actions. Buyers fully indemnify Hunter Douglas and its representatives against any damages arising out of the use of any Hunter Douglas components in safety-critical applications.